



## Flat 1 2 Park Terrace, Liverpool, L22 3XB

### **£1,100 Per month**

Zero Deposit Option Available

Welcome to this charming apartment located on the desirable Park Terrace in Liverpool, Merseyside. This delightful property offers a perfect blend of comfort and convenience, making it an ideal choice for individuals or small families seeking a new home.

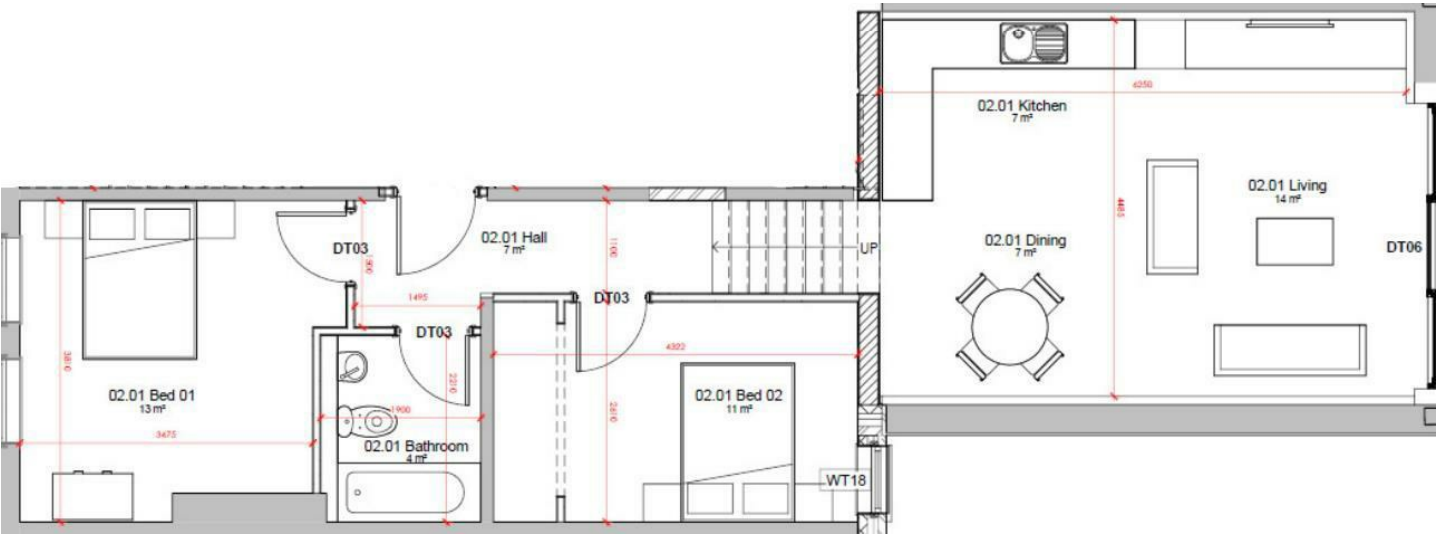
This spacious ground floor apartment benefits from large bi-folding doors opening onto a generous private south facing private garden with a large patio and lawned area. The apartment is furnished with high quality furniture and equipped with high quality appliances.

One of the standout features of this apartment is the availability of parking on a first come first served basis, a valuable asset in this bustling area. This convenience allows for easy access to your vehicle, making trips around the city or beyond a breeze.

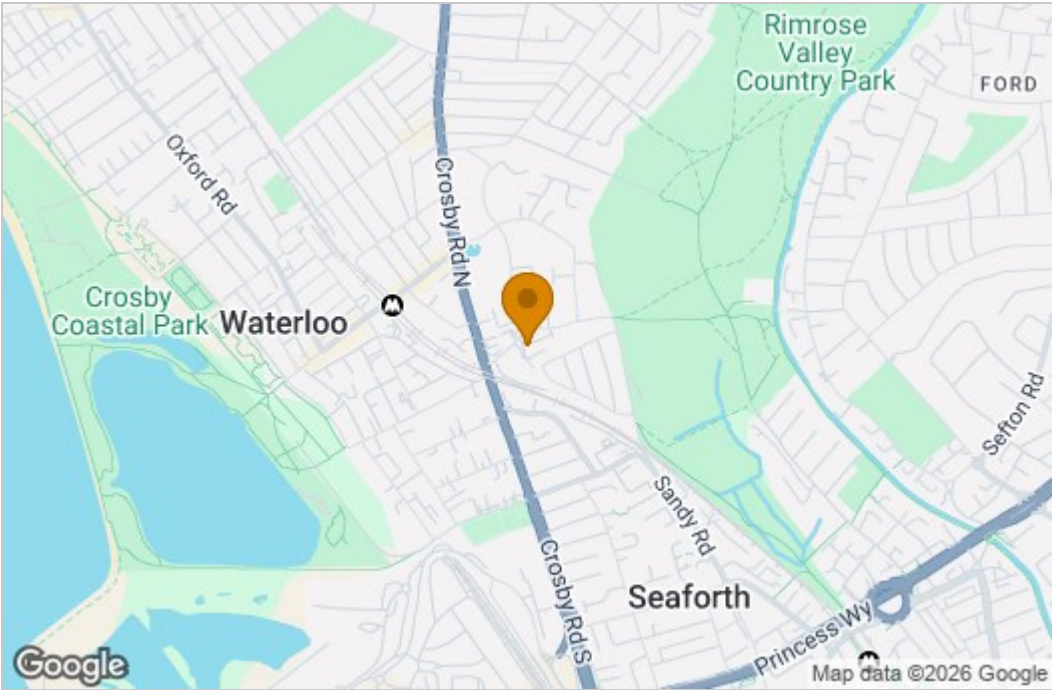
Situated in a vibrant neighbourhood, this apartment is close to local amenities, parks, and transport links, providing you with everything you need within easy reach. Whether you are looking to explore the cultural



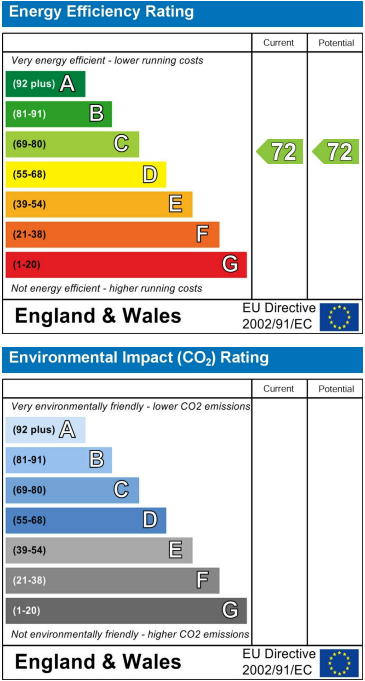
Floor Plan



Area Map



Energy Efficiency Graph



These particulars, whilst believed to be accurate are set out as a general outline only for guidance and do not constitute any part of an offer or contract. Intending purchasers should not rely on them as statements of representation of fact, but must satisfy themselves by inspection or otherwise as to their accuracy. No person in this firms employment has the authority to make or give any representation or warranty in respect of the property.